

# Marlborough Area Board Police Report April 2018

## 1. East Community Policing Team

Sector Head: Insp. Chris Martin

Community Coordinator: PC 2620 GRIGOR

Marlborough PCSO's:



PCSO 6195 Lucy STONESTREET  
MARLBOROUGH



PCSO 6035 Mark BRAITHWAITE  
MARLBOROUGH



PCSO 7712 Emily SYKES

## Target Patrols Marlborough and surrounding areas:

### Beauty Spot Theft from Motor Vehicles:

On the 16th January 2018 we relaunched this priority due to this area of the county still suffering a significant amount of thefts. The difference being that this time, we have identified potential suspects

and are following numerous intelligence leads. Since the above date we officers have made 39 patrols of all of our beauty spot car parks; however thieves appear to be favouring:  
DOWNS LANE, MANTON, MARLBOROUGH  
ROUNDWAY HILL, DEVIZES  
EAST/ WEST KENNETT  
WIDDINGTON HILL, UPAVON  
WOOTTEN RIVERS, PEWSEY  
AVEBURY  
A4 SILBURY HILL  
ALTON BARNES  
GRAND AVENUE, SAVERNAKE

You will be pleased to hear that after securing funding from the 'Area Board' Wiltshire Police have been able to erect 'Warning Signs' at the majority of these

PCSO's have been issuing leaflets to members of the public and parked cars in the areas in order to highlight the issues.



## Media

Facebook <https://www.facebook.com/wiltshirepolice/>

Or sign up to Community Messaging <https://www.wiltsmessaging.co.uk/>

## Consultations

Your PCSO's or Police officers are available to speak with on the following dates and locations:-

- 16<sup>th</sup> April 1900-2030 Town Council Meeting
- 2<sup>nd</sup> May 0900-1230 Marlborough Market, High Street
- 16<sup>th</sup> May 0900-1230 Marlborough Market, High Street
- 23<sup>rd</sup> May 0900-1230 Marlborough Market, High Street

PCSO Emily SYKES will be holding a surgery at Marlborough Library starting on 2<sup>nd</sup> June between 1000-1200hrs- future dates will be posted on our Marlborough Police Facebook Page.

## **Drugs**

Between 01<sup>st</sup> February 2018 and 1<sup>st</sup> April 2018 there have been no reported incidents relating to drugs in the Marlborough area.

This is a decrease from the previous report.

## **Domestic Abuse**

Marlborough CPT have dealt with 18 domestic incidents in the Marlborough area since the 1<sup>st</sup> February 2018.

A number of these incidents have resulted in criminal action being taken.

## **Missing Persons**

Marlborough CPT have dealt with 9 reports of missing persons between 1<sup>st</sup> Feb 2018 - 1<sup>st</sup> April 2018

These missing persons can vary between children, young persons, adults and the elderly. Each individual case is graded appropriately to the circumstances.

## **Whats been happening in Marlborough**

Whilst carrying on foot patrol on the High Street PCSO Emily SYKES has had a chat with staff from the 4<sup>th</sup> Military Intelligence Battalion who were raising money for Julia's House, The Soldiers Charity and Home Start.



A man has been charged with four burglaries in Swindon and Marlborough. Lee Dommett, 34, of Ramsbury Avenue, Penhill, Swindon, is currently on conditional bail and is due to appear at Swindon Crown Court next month.

He is charged with:

- Burglary at a house in Swindon on 29 March 2018.
- Burglary at the Beute Clinic, in Marlborough, on 12 February 2018.
- Burglary at Angling Direct, Swindon, on 30 September 2017.
- Burglary at Wessex Squash Club, in Swindon, on 21 September 2017.

He was also charged with one count of possession of cannabis and has been fined £50 and ordered to pay a £30 victim surcharge. A quantity of cannabis was also destroyed under the Misuse of Drugs Act.





Today Trading Standards have been out with Officers in Marlborough delivering information on Telephone scams and door to door scams. If you would like anymore information in regards to this please let us know or contact Trading Standards.



## Update re Rural Crime Partnership



9 April at 18:01 · 🌐

🐕 Calling all dog owners! Think livestock – think lead!



📢 Livestock worrying is a criminal offence and the penalty can be 6 months imprisonment and/or a fine of up to £1000. 📢

Any dog can worry livestock – avoid any potential risk by simply putting your dog on a lead when near any livestock.

Livestock Worrying isn't just if your dog bites or attacks livestock. It is also if your dog chases livestock in such a way as may be reasonably expected to cause injury/suffering or not having a dog on a lead or under close control when close by, or in a field/enclosure with livestock.

It can be really traumatic for farmers who have to deal with the aftermath of a livestock worrying incident, not to mention the financial impact it has.

We are asking dog owners to act responsibly and if they see livestock while out walking their dog to promptly put their dog on a lead.

📱 If you see anything suspicious call 101 or 999 if the crime is in progress. #ReportIt



4 April at 15:20 · 🌐

Two men have been charged with burglary and theft following a report of batteries being stolen from a farm in Everleigh on 27 March.

Sean William Hughes, aged 24, of Southampton Road, Salisbury, and Gilbert Raymond Turner, aged 29, of Ridgeway Lane, Blandford, Dorset, have both been charged with theft in relation to the incident in Everleigh, and burglary in relation to an incident involving batteries being stolen from a barn in Coombe Bissett on 26 March.

The vehicle they were travelling in when officers arrested the pair was also seized for having no insurance and for being used in the commission of crime.

They have both been released on bail and are due to appear at Salisbury Magistrates Court on 20 April.



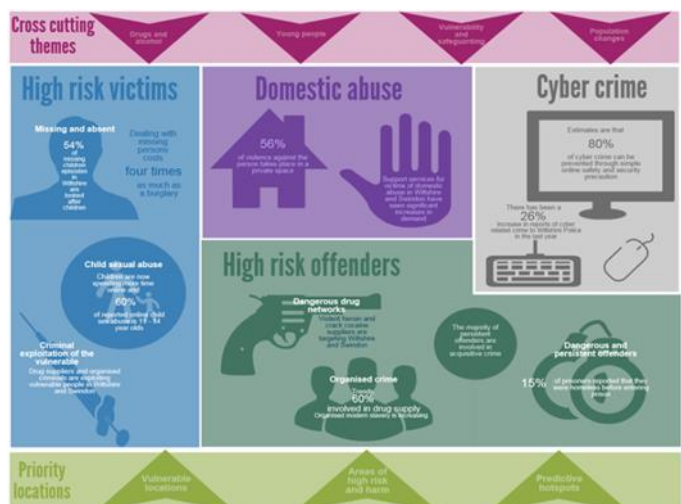
## Wiltshire Police Control strategy

Below is our Control Strategy for your reference. This focuses on how we conduct our operational policing based on the Police and Crime Plan. We will continue to align our resources with the threat/harm/risks presented in line with the control strategy.

The Control strategy sets out Wiltshire Police priorities and assists staff to identify which types of incident need particular attention. The four priorities are:-

- High Risk Victims
- Domestic Abuse
- High Risk Offenders
- Cyber Crime

As the illustration to the right shows, there are cross cutting themes and priority locations that also affect how incidents are dealt with.



## **Dangerous and Persistent offenders**

Work is continuing with our SWITCH nominals, (those who are identified as persistent and prolific offenders), including intelligence gathering and relevant actions following dissemination. We currently have two nominals within the East Policing Area classified as such and we work closely with our SWITCH team members and partner agencies to manage these offenders.

**Chris Martin**  
Sector Inspector,  
Wiltshire East CPT